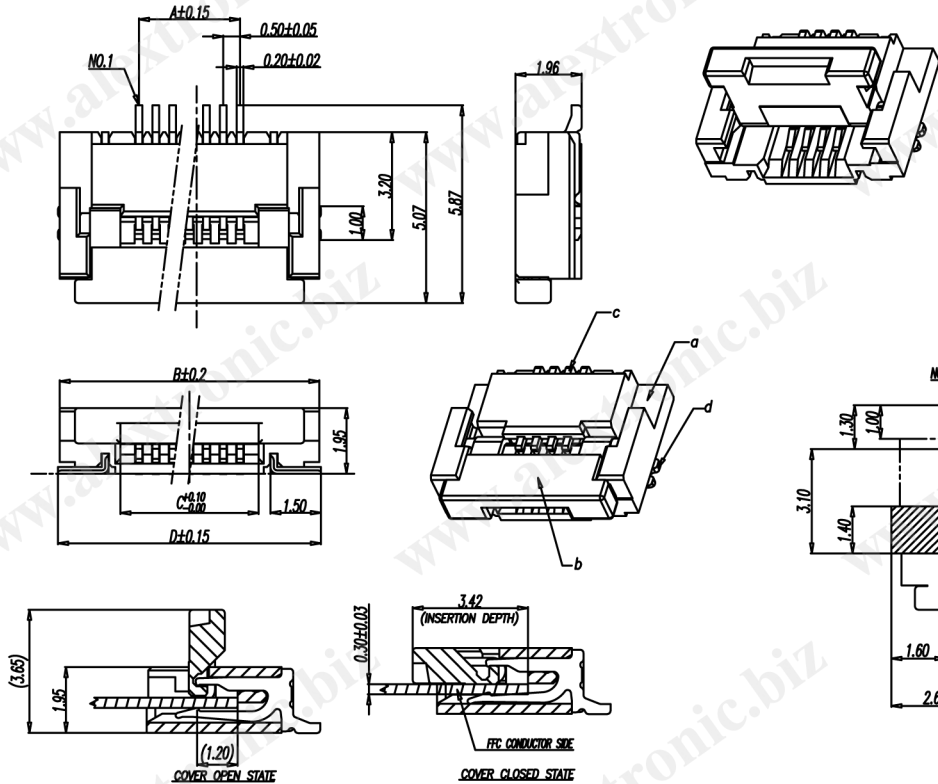


CATEGORY	DESCRIPTION	P/N #
CONNECTOR	PITCH 0.5mm FPC CONNECTOR SMT TYPE	FC122R-XX010-102S

FC122R-XX010-102S
See Table 1

REV.	ECN NO	DESCRIPTION	REVISED	DATE
A01		New Release	JXM	2009.09.15

- SPECIFICATION
- CURRENT RATING : 0.5 Amp MAX.
 - DIELECTRIC WITHSTANDING VOLTAGE : AC 250V.
 - INSULATION RESISTANCE: 50MΩ MIN.
 - OPERATING TEMPERATURE : -20°C TO +85°C.
 - MAX. PROCESSING TEMPERATURE : 245°C FOR 30 SEC.



d	PEG	2	BRASS, t=0.2mm	TIN PLATING
c	TERMINAL	XX	PHOSPHOR BRONZE, t=0.2mm	TIN PLATING
b	COVER	1	HEAT RESISTANCE PLASTIC, UL94V-0	BLACK
a	HOUSING	1	HEAT RESISTANCE PLASTIC, UL94V-0	NATURE
NO.	PART NAME	Q'TY	MATERIAL	PLATING & COLOR

UNLESS OTHERWISE SPECIFIED TOLERANCES:	SCALE: free	UNIT: mm	DWG. NO:
DECIMALS: X: ±0.5, X.X: ±0.3, X.XX: ±0.2	SIZE: A3	PAGE: 1 OF 2	REV: A01
ANGLES: X: ±2°, X.X: ±1°	APPROVED BY: WYX	CHECKED BY: Pengjie	PREPARED BY: JXM
CUSTOMER COPY			

CATEGORY	DESCRIPTION	P/N #
CONNECTOR	PITCH 0.5mm FPC CONNECTOR SMT TYPE	FC122R-XX010-102S

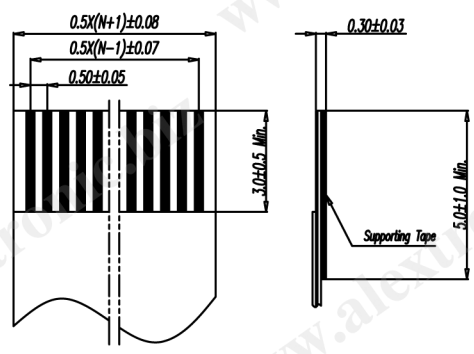
FC122R-XX010-102S
See Table 1

REV.	ECN NO	DESCRIPTION	REVISED	DATE
A01		New Release	JXM	2009.09.15

- SPECIFICATION
- CURRENT RATING : 0.5 Amp MAX.
 - DIELECTRIC WITHSTANDING VOLTAGE : AC 250V.
 - INSULATION RESISTANCE: 50MΩ MIN.
 - OPERATING TEMPERATURE : -20°C TO +85°C.
 - MAX. PROCESSING TEMPERATURE : 245°C FOR 30 SEC.

Table 1:
Pin QTY & Dimension

Q'TY	Dimension				Q'TY	Dimension			
	A	B	C	D		A	B	C	D
04	1.50	6.20	2.60	6.30	33	16.00	20.70	17.10	20.80
05	2.00	6.70	3.10	6.80	34	16.50	21.20	17.60	21.30
06	2.50	7.20	3.60	7.30	35	17.00	21.70	18.10	21.80
07	3.00	7.70	4.10	7.80	36	17.50	22.20	18.60	22.30
08	3.50	8.20	4.60	8.30	37	18.00	22.70	19.10	22.80
09	4.00	8.70	5.10	8.80	38	18.50	23.20	19.60	23.30
10	4.50	9.20	5.60	9.30	39	19.00	23.70	20.10	23.80
11	5.00	9.70	6.10	9.80	40	19.50	24.20	20.60	24.30
12	5.50	10.20	6.60	10.30	41	20.00	24.70	21.10	24.80
13	6.00	10.70	7.10	10.80	42	20.50	25.20	21.60	25.30
14	6.50	11.20	7.60	11.30	43	21.00	25.70	22.10	25.80
15	7.00	11.70	8.10	11.80	44	21.50	26.20	22.60	26.30
16	7.50	12.20	8.60	12.30	45	22.00	26.70	23.10	26.80
17	8.00	12.70	9.10	12.80	46	22.50	27.20	23.60	27.30
18	8.50	13.20	9.60	13.30	47	23.00	27.70	24.10	27.80
19	9.00	13.70	10.10	13.80	48	23.50	28.20	24.60	28.30
20	9.50	14.20	10.60	14.30	49	24.00	28.70	25.10	28.80
21	10.00	14.70	11.10	14.80	50	24.50	29.20	25.60	29.30
22	10.50	15.20	11.60	15.30	51	25.00	29.70	26.10	29.80
23	11.00	15.70	12.10	15.80	52	25.50	30.20	26.60	30.30
24	11.50	16.20	12.60	16.30	53	26.00	30.70	27.10	30.80
25	12.00	16.70	13.10	16.80	54	26.50	31.20	27.60	31.30
26	12.50	17.20	13.60	17.30	55	27.00	31.70	28.10	31.80
27	13.00	17.70	14.10	17.80	56	27.50	32.20	28.60	32.30
28	13.50	18.20	14.60	18.30	57	28.00	32.70	29.10	32.80
29	14.00	18.70	15.10	18.80	58	28.50	33.20	29.60	33.30
30	14.50	19.20	15.60	19.30	59	29.00	33.70	30.10	33.80
31	15.00	19.70	16.10	19.80	60	29.50	34.20	30.60	34.30
32	15.50	20.20	16.60	20.30					



d	PEG	2	BRASS, t=0.2mm	TIN PLATING
c	TERMINAL	XX	PHOSPHOR BRONZE, t=0.2mm	TIN PLATING
b	COVER	1	HEAT RESISTANCE PLASTIC, UL94V-0	BLACK
a	HOUSING	1	HEAT RESISTANCE PLASTIC, UL94V-0	NATURE
NO.	PART NAME	Q'TY	MATERIAL	PLATING & COLOR

UNLESS OTHERWISE SPECIFIED TOLERANCES:	SCALE: free	UNIT: mm	DWG. NO:
DECIMALS: X: ±0.5, X.X: ±0.3, X.XX: ±0.2	SIZE: A3	PAGE: 2 OF 2	REV: A01
ANGLES: X: ±2°, X.X: ±1°	APPROVED BY: WYX	CHECKED BY: Pengjie	PREPARED BY: JXM
CUSTOMER COPY			